

Title	Identification of a glucan-binding protein C gene homologue in <i>Streptococcus macacae</i>
Author(s) Alternative	Okamoto-Shibayama, K; Sato, Y; Yamamoto, Y; Ohta, K; Kizaki, H
Journal	Oral microbiology and immunology, 21(1): 32-41
URL	http://hdl.handle.net/10130/60
Right	The definitive version is available at www.blackwell-synergy.com

Identification of a glucan-binding protein C gene homologue
in *Streptococcus macacae*

Running title: *S. macacae* *gbpC* gene homologue

Kazuko Okamoto-Shibayama, Yutaka Sato,
Yasuhito Yamamoto, Kazumasa Ohta, and
Harutoshi Kizaki

Department of Biochemistry, Oral Health Science Center,
Tokyo Dental College

Masago 1-2-2, Mihama-ku, Chiba City, 261-8502, Japan

For correspondence

(Address) Masago 1-2-2, Mihama-ku, Chiba City, 261-8502, Japan

(Tel) 81-43-270-3750

(Fax) 81-43-270-3752

(E-mail)okamotok@tdc.ac.jp

Abstract

Background: The past few decades have seen the isolation of certain glucosyltransferases and a number of proteins from mutans streptococci. Some of these proteins have been determined as possessing glucan-binding capabilities which confer an important virulence property on mutans streptococci in the role of those bacteria in dental caries. Among these proteins, is glucan-binding protein C, which is encoded by the *gbpC* gene, and which we have identified as being involved in the dextran-dependent aggregation of *Streptococcus mutans*. However *gbpC* homologues have yet to be identified in other mutans streptococci.

Methods: We carried out PCR amplification of *Streptococcus macacae* using primers that were designed based on conserved sequences of *S. mutans* *gbpC* and identified a *gbpC* gene homologue. The gene of that homologue was then characterized.

Results: Nucleotide sequencing of the *S. macacae* *gbpC* homologue revealed a 1,854 bp open reading frame encoding a protein with an N-terminal signal peptide. The molecular mass of the processed protein was calculated to be 67 kDa. We also found an LPxTG motif, the consensus sequence for Gram-positive cocci cell wall-anchored surface proteins, which was followed by a characteristic sequence at the carboxal terminal region of the putative protein. This suggests that the *S. macacae* GbpC homologue protein was tethered to the cell wall.

Conclusion: Based on these results, together with the demonstrated glucan-binding ability of the *S. macacae* GbpC homologue protein, we suggest that *S. macacae* cells are capable of binding dextran via the GbpC homologue

protein which is similar to the *S. mutans* GbpC protein. In addition, Southern hybridization analysis using the *S. macacae* *gbpC* homologue as a probe showed a distribution of *gbpC* homologues throughout all the mutans streptococci.

Introduction

Mutans streptococci have been implicated as the most important microbial agents in dental caries (14). One important virulence property of these organisms is their ability to adhere to tooth surfaces by producing several extracellular proteins or enzymes (14). In a previous study, we identified and characterized *Streptococcus mutans* glucan-binding protein C (GbpC) as a wall-anchored surface protein characteristic of Gram-positive bacteria (29). This protein probably participates in adherence to tooth surfaces where mediated by α -1, 6 glucan (dextran), and therefore may contribute to the cariogenicity of these organisms (16, 18, 27). Four genes encoding glucan-binding proteins (GBPs) in *S. mutans* have been identified so far and designated in the order of their discovery as *gbpA* (3), *gbpB* (17), *gbpC* (29), and *gbpD* (32). Among these GBPs, only the GbpC protein is involved in dextran-dependent aggregation (ddag), defined as the ability to immediately autoaggregate in the presence of exogenously added dextran (15). *Streptococcus sobrinus* has been found to aggregate more readily than *S. mutans* (7, 38), and several GBPs have been reported in *S. sobrinus*, including candidates involved in ddag, (15, 34). However, no GBP genes have been identified in *S. sobrinus* or any other mutans

streptococcus, except for *S. mutans*.

Streptococcus macacae isolated from the macaque monkey is a species of mutans streptococci (5). Its cariogenicity, however, has yet to be experimentally verified. As a mutans streptococcus, *S. macacae* exhibits several relevant cariogenic properties, including sucrose-dependent smooth surface attachment, acidogenicity and colonial morphology specific to mutans streptococci on Mitis-Salivarius agar plates. This organism is more similar to *S. mutans* than other mutans streptococci in respect to serotype polysaccharide antigens and genomic GC content (5). However, only a few nucleotide sequences e.g. those encoding 16S ribosomal RNA, elongation factor Tu (*tuf*), Cnp60 (*cnp60*), and ribonuclease P have been determined in *S. macacae* so far (accession numbers AF276268, AY123711, AJ511702, and X58302, respectively). There are no reports characterizing the genes responsible for the cariogenic properties of *S. macacae* as yet. In the present study, we found that *S. macacae* also exhibited ddag, and attempted to detect a *gbpC* homologue in the *S. macacae* chromosome by PCR using primers designed based on the *gbpC* nucleotide sequences determined from 19 strains of *S. mutans* (25). Furthermore, to investigate the universality and distribution of *gbpC* homologous genes in mutans streptococci, we performed Southern hybridization analysis on 7 species of mutans streptococcus using an *S. macacae gbpC* homologue fragment probe.

Materials and Methods

Bacterial strains and plasmids.

S. macacae strain ATCC 35911 (serotype c) was used for the identification and cloning of the *gbpC* gene homologue and glucan-binding assays. *S. mutans* strain 109cS (serotype c), which is a spontaneous colonization-defective mutant of 109c due to homologous recombination between the *gtfB* and *gtfC* genes (29), and *S. sobrinus* strain ATCC6715 were used as references for dextran-dependent aggregation. *S. mutans* strain Z1, which is a ddag-defective mutant due to a single nucleotide deletion resulting in a frameshift mutation in *gbpC* (accession number AB195694), was used for the complementation test. In addition, *S. criceti* strains HS6 (ATCC19642) and OMZ61, *S. rattii* strains 107P and FA-1 (ATCC19645), *S. mutans* strain UA159 (ATCC700610), *S. sobrinus* strain 100-4 (clinical isolate), *S. downei* strain Mfe28 (ATCC33748), *S. ferus* strain 8S1 (ATCC33477), *S. sanguinis* strain ATCC10556, *S. gordonii* strain Challis, *S. anginosus* strain IS57, and *S. salivarius* strain ATCC9222 were all subjected to Southern hybridization analysis. The streptococci were maintained and cultured in Todd-Hewitt (TH) broth/agar plates. *Escherichia coli* strain TOP10 obtained from a commercial supplier (Invitrogen, Carlsbad, CA, USA), was used as a host for plasmid pBAD/His and its derivatives.

Dextran-dependent aggregation (ddag)

S. macacae was streaked onto TH agar plates and aerobically incubated at 37 °C for two days. Colonies were picked and cultured in Todd Hewitt broth overnight at 37°C without shaking. The culture was then transferred as a 1% inoculum into screw-capped glass tubes containing fresh BTR-G broth (31) (1% Bacto Tryptone, 0.1% Bacto yeast extract, 0.05% sodium thioglycolate, 0.61%

K₂HPO₄, 0.2% KH₂P0₄, 1 mM MgSO₄, 0.1 mM MnSO₄, 0.2% glucose). As reference strains, *S. mutans* 109cS and *S. sobrinus* ATCC6715 were grown in BTR-G broth with and without a sublethal concentration (0.18 µg/ml) of tetracycline (tet) as a stress inducer, respectively. The cultures were incubated for 24 h and then divided into two 1.0 ml portions and a solution of dextran T2000 (molecular weight, 2,000,000; Sigma-Aldrich Co., St. Louis, Mo.) added to one of them to a final concentration of 100 µg/ml. Each pair of tubes was swirled for more than 2 minutes and observed visually for aggregation (29).

Southern hybridization analysis.

The streptococcal strains were subjected to agarose gel electrophoresis and the appropriate restriction enzyme-digested chromosomal DNA fragments were separated and transferred onto nylon membranes (NytranN, Schleicher and Schuell, Dassel, F.R.G) as described previously (23, 30). The chromosomal fragments were hybridized with an *S. mutans* intact *gbpC* gene or *S. macacae* *gbpC* homologue fragments as probes and then analyzed using the Enhanced Chemiluminescence (ECL) Direct Nucleic Acid Labeling and Detection System recommended by the supplier (Amersham Biosciences Corp., Piscataway, NJ).

The *S. mutans* *gbpC* 1944 bp gene fragment containing the intact gene to be used as a probe was amplified by PCR from *S. mutans* 109cS chromosomal DNA with forward primer *gbpC*5' (5'-GAGAAAGCACTTTGGTTTCAA -3') and reverse primer *gbpC*3' (5'-ACATATTTTTCTCCAACCCTG -3'). The *S. macacae* *gbpC* homologue fragment probe was amplified from *S. macacae* ATCC 35911 chromosomal DNA with forward primer SMA-FuF (5'-ATCTCGAGGCTGCTC

AGCAAATGTT -3') and reverse primer SMA-FuR (5'-ATGAATTCAGTTTGAGG AAGCGGAGCA GTATA -3').

PCR amplification of *gbpC* homologue from *S. macacae* chromosome.

The primers were designed based on the codon bias of *S. macacae* and the conserved sequences which were revealed by comparing 19 *gbpC* sequences from different strains of *S. mutans* (DDBJ, EMBL and GenBank nucleotide sequence databases under accession numbers D85031, NC_004350, and AB195694-AB195710). The PCR primers used in this study are listed in Table 1. Each PCR mixture (50 μ l) consisted of 1x cloned *Pfu* reaction buffer, 200 μ M dNTPs, 100 ng/ml oligonucleotide primers, 2.5 U of *PfuTurbo* hot start DNA polymerase (Stratagene Corp., La Jolla, CA), and 5 μ l of template (100 ng/ml *S. macacae* chromosomal DNA). The PCR thermal conditions were as follows: activation at 95 $^{\circ}$ C for 2 min, 30 cycles of 3-step amplification (95 $^{\circ}$ C for 30 s, 54 $^{\circ}$ C for 30 s, and 72 $^{\circ}$ C for 70 s), followed by a final extension at 72 $^{\circ}$ C for 10 min. Agarose gel (1.5%) electrophoresis was used to analyze the PCR products.

Chromosome walking.

A genome walking library was constructed with the Universal GenomeWalker Kit (Clontech, Palo Alto, CA) and the *Bam* HI, *Pvu*II, and *Ssp*I restriction sites confirmed by Southern hybridization analysis. The initial amplicon was used for the Southern hybridization analysis as a probe against *S. macacae* chromosomal DNA. The *S. macacae* chromosomal fragments flanking

the initial amplicon were then amplified with an adopter primer (AP1) and gene specific primers, as recommended by the supplier. The amplified fragments were then purified and sequenced using the same primers. Based on the obtained nucleotide sequence information, subsequent forward and reverse primers were designed and appropriate fragments were amplified for sequencing. The locations and sequences of the primers used are indicated in Fig. 1.

Nucleotide sequencing and sequence analysis.

The amplified fragments were purified with a QIAquick PCR Purification Kit (Qiagen K.K., Tokyo, Japan). The corresponding regions were directly sequenced with a BigDye Terminator Cycle Sequencing FS Ready Reaction Kit using the primers listed in Table 1 and an ABI PRISM Genetic Analyzer 310 (Applied Biosystems, Foster City, CA) as described previously (27). The nucleotide sequences of both strands of the 2.6 kb fragments encompassing the *S. macacae gbpC* gene homologue were then determined. We used BLAST programs to search the *S. mutans* genome database at the University of Oklahoma's Advanced Center for Genome Technology (<http://www.genome.ou.edu/smutans.html>) and the International DNA databases (EMBL, GenBank, and DDBJ) for similar amino acid sequences. Sequence analyses and multiple alignments were carried out with DNASIS-Mac (Hitachi Software Engineering, Yokohama, Japan) and GENETYX-MAC (Genetyx corporation, Tokyo, Japan) programs.

Cloning and expression of *S. macacae* GbpC homologue protein.

A gene fragment expressing the *S. macacae* GbpC homologue, but not the region encoding the signal sequence predicted by the SignalP program 3.0 ([http:// www.cbs.dtu.dk/services/SignalP/](http://www.cbs.dtu.dk/services/SignalP/)) (20), was amplified by PCR using forward primer SMA-FuF2 (5'-ATCTCGAGGTTTTTGCAGATGATATCAATGCTGC-3') and reverse primer SMA-FuR (5'-ATGAATTCAGTTTGAGGAAG CGGAGCAGTATA -3'). It was then ligated inframe to the 5' histidine-tag region (the *Xho*I and *Eco*RI sites utilized are underlined in the sequences) of expression vector pBAD/HisA (Invitrogen). Following transformation with *E. coli* strain TOP10, the resulting clones were analyzed as described previously (23). One of these clones, pBAD-SmaGbpC, was used to perform glucan-binding assays along with strain TOP10 harboring vector pBAD/HisA (strain pBAD) as a control. The cells of these strains grown with or without 2×10^{-3} % arabinose as an inducer were collected, washed, and subjected to 6 cycles of ultrasonication to obtain crude cell-free extracts for the glucan-binding assays as described previously (28). Before the assays, induction of histidine-tagged proteins was confirmed with SDS-PAGE and Coomassie Brilliant Blue R (CBBR) staining. The proteins were also analyzed by Western blot analysis using anti-GbpC antibody. The five gene fragments expressing the partial GbpC homologue proteins (pBAD-FraA, B, C, D, and E) were also constructed as described above. pBAD-FraA and pBAD-FraB are the homologous regions of *S. mutans* GbpC fragment A and fragment B, respectively (Matsumoto, personal communication). pBAD-FraC, pBAD-FraD, and pBAD-FraE were designed based on the predicted secondary structure of

the *S. macacae* homologue protein. The primers used for amplifying the fragment A homologous region were forward primer SMA-FraAFW (5'-ATCTCGAGGAAGCTGCAGATGCTGA TAATAA-3') and reverse primer SMA-FraARV (5'-ATGAATTCTTATGAGTAGTTCACGGATTTAG GAG -3'). The primers used for amplifying the fragment B homologous region were forward primer SMA-FraBFW (5'-ATCTCGAGGCTGGCCGAGTGGAAA -3') and reverse primer SMA-FraBRV (5'-ATGAATTCTAGCCTAAATTGACC TTCTCTATATGG -3'). The forward primers used for amplifying the fragment C, D, and E regions were SMA-FraCFW (5'-ATCTCGAGCAAAAAGAAGTAGCAG CTGGTAAA-3'), SMA-FraDFW (5'-ATGAATTCTTAATGACTATTGAAGGTGTC AGCCAA -3'), and SMA-FraEFW (5'-ATCTCGAGAATTATTCTAATTCAGACTA TGTCAGTCAA-3'), respectively. Reverse primer SMA-FraARV was also used for amplifying the fragment C, D, and E regions. The appropriate concentrations of arabinose as an inducer were 2×10^{-2} % for fragments A, C, D, and E, and 2×10^{-3} % for fragment B

Glucan-binding assay.

Glucan-binding assays were carried out using biotin-dextran (dextran, biotin, 70,000 molecular weight, lysine fixable; Molecular Probes Europe BV, The Netherlands) as described previously (13), but modified to utilize the Ni-affinity of the histidine tag to immobilize the proteins by the method of Shah and Russell (32).

The crude extracts from the induced *E. coli* strain cells with the overexpression plasmids or vector controls were prepared as described above.

Preliminary experiments revealed that >10 µl of crude extract was sufficient to saturate the binding capacity of Ni-NTA coated wells (data not shown). Therefore, 50 µl of crude extract was added to the Ni-NTA-coated 96-well HisSorb Plates (Qiagen K.K., Tokyo, Japan) in PBS containing 0.05%(v/v) Tween 20 (PBST) to a final volume of 200 µl and incubated overnight at 4 °C. The protein solutions were then removed and the wells were given 4 one-minute washes with 200 µl PBST. A 200µl solution of biotin-dextran in PBS +0.2% BSA (PBSB) was added and incubated for 10 min. After washing as described above, the wells were incubated with 200 µl of a 1:500 dilution of Streptavidin-horseradish peroxidase conjugate (Amersham Biosciences Corp.) in PBSB for 30 min and then given 4 one-minute washes with 200 µl PBST. An aliquot of 100 µl o-Phenylenediamine dihydrochloride was used as a substrate for color development of the solutions. After incubation with the substrate solution for 1.5 min, 50 µl of 2N H₂SO₄ was added to stop the reaction, and the resulting A₄₉₀ was then measured in a microplate reader (BioRad MICROPLATE READER model 3550).

For competition studies, 100 µl of competitors (unlabelled dextran: Dextran D-1537, 72,400 molecular weight, Sigma-Aldrich Co., St. Louis, Mo.; and amylose: Amylose A-0512, Sigma-Aldrich Co.) were added to 100 µl of biotin-dextran solution in PBSB and the plates incubated at room temperature for 10 min, followed by treatment as described above.

Next, the affinity of α-1, 3 glucan (kindly provided by Professor Kodama, Kyushu Institute of Technology) for the *S. macacae* GbpC homologue protein was examined. Four hundred µl PBST containing a volume corresponding to

0.1 μ l crude extract was prepared and divided into two 200 μ l portions. Twenty mg of α -1, 3 glucan were added to one tube following swirling for 5 minutes. Glucan-binding assays were then performed as described above, and the affinity of the α -1, 3 glucan for the *S. macacae* GbpC homologue protein was monitored for glucan-binding activity and compared to the α -1, 3 glucan added to the protein deficient sample.

SDS-PAGE and Western blot analysis.

The crude extracts from the induced *E. coli* cells with the overexpression plasmids or vector controls described above were mixed with SDS sample buffer and frozen until electrophoretic analysis using the Laemmli-gel system with 5-20% acrylamide gels (SuperSepTM, Wako, Osaka Japan). Following SDS-PAGE, the separated proteins were transferred to PVDF membrane (Immobilon-PTM, Millipore Corporation, Bedford, MA), and Western blot analysis with either anti-Xpress antibody or anti-serum generated against the *S. mutans* GbpC protein was carried out as described previously (29).

Complementation test in *S. mutans* strain Z1 by construction of chimeras *in vitro*.

Constructing mutants of the *gbpC* homologue in *S. macacae* is difficult because of its non-transformable nature (unpublished results). Therefore, we constructed chimeric gene fragments composed of the *S. macacae gbpC* homologue and *S. mutans cnm* (26) by employing asymmetric PCR techniques

which utilized 5'phosphorylated primers *in vitro*. All PCR amplifications were carried out with high fidelity DNA polymerases (either *PfuTurbo* hot start DNA polymerase (Stratagene) or KOD -Plus- DNA polymerase (TOYOBO, Osaka, Japan)). Each of the PCR amplification products in this procedure was purified using a QIAquick PCR Purification Kit (Qiagen). The sequences of the primers used in this experiment are listed in Table 1.

The 180bp *S. mutans cnm5'* gene fragment, including the region encoding the signal sequence, and the 2 kb fragment of the *S. macacae* intact *gpc* homologue region were amplified using PCR primers *cnmChiF* and *cnmChiR* for the former, and *SmaChiF* and *SmaChiR* for the latter. These fragments were then used as templates following asymmetric PCR. The primers were designed for inframe ligation of both fragments. Asymmetric PCR using primers *cnmCRT* and *SmaCFT* was performed using the above-mentioned PCR products as templates. PCR thermal conditions consisted of 94°C for 12 s, 60°C for 30 s, and 67°C for 7 min using *rTth* DNA polymerase (TOYOBO) to add 3'-Adenine residue overhangs at the end of PCR products to diminish unwanted ligations. Primers *cnmCRT* and *SmaCFT* were 5'phosphorylated and were designed to produce complementary single strands which protrude from asymmetric PCR products, allowing them to be annealed and ligated with each other. Ligation was performed overnight at 16 °C with T4DNA ligase. The ligated fragments were subjected to PCR amplification with primers *cnmChiF* and *SmaChiR*. The resulting 2.2 kb fragment (*S. mutans cnm5':: S. macacae gpc* homologue) was obtained and chimeric ORF was confirmed by nucleotide sequencing. The *Em^r-cnm3'* fragment was prepared by ligating the 1.1 kb *Em^r* fragment upstream

of the *cnm* 3' fragment subcloned by TA cloning and subjected to PCR with P8 primer (TOYOBO) and *cnmChkR*. In the same way as described above, a 3.8 kb fragment composed of the *S. mutans cnm5'*:: *S. macacae gbpC* homologue and the Em^r - *cnm3'* was also constructed. This fragment was then transformed into *ddag*-defective *S. mutans* strain Z1, which we have previously found to exhibit cold agglutination (26). The colonies were screened following *ddag* and cold agglutination assays.

Nucleotide sequence accession number.

The nucleotide sequence data reported in this paper will appear in the DDBJ, EMBL and GenBank nucleotide sequence databases under accession number AB195308.

Results

Presence of homologue of *S. mutans gbpC* gene on *S. macacae* chromosome.

Dextran-dependent aggregation (*ddag*) in *S. macacae* was investigated as described in Materials and Methods. *S. macacae* exhibited *ddag*, as did *S. mutans* and *S. sobrinus* which were used as reference strains (Fig. 2) (29). Although *S. macacae* did not autoaggregate as strongly as did *S. sobrinus*, its aggregation properties were similar to those of *S. mutans*. The aggregation of *S. mutans* was dependent on the growth media, and was difficult to detect with

either Brain Heart infusion or Todd Hewitt broth. In contrast, *S. macacae* cells exhibited aggregation upon addition of dextran, even when grown in Todd Hewitt broth under non-stress conditions. This showed behavior similar to that of *S. sobrinus* in this respect.

Southern hybridization analyses of *Pst*I- and *Hind*III-digested chromosomal DNA fragments from *S. macacae* chromosomal DNA revealed cross-hybridizing bands when probed with labeled *S. mutans* whole *gbpC* gene fragment, although the band intensities in the *S. macacae* were not as strong as those displayed by *S. mutans* (data not shown). Taken together with the results for *ddag* in *S. macacae*, this suggests that *S. macacae* possesses a homologue of the *S. mutans gbpC* gene.

Detection of *S. macacae gbpC* gene homologue by PCR amplification.

The high stringency conditions of the Southern hybridization analysis of *S. macacae* chromosomal DNA using the *S. mutans gbpC* gene fragment as a probe yielded positive bands. For example, *Pst*I-digested *S. macacae* chromosome exhibited approximately 4 kb positive bands (data not shown). Therefore, we attempted to amplify an *S. macacae gbpC* gene homologue. We have previously detected a *gbpC* nonsense mutation in strain GS-5 (27). In addition to this mutation, several synonymous and non-synonymous nucleotide substitutions have been detected in the gene of this strain. Polymorphism in the *gbpC* gene was expected, so we determined the 19 *gbpC* sequences from different strains of *S. mutans*. The results indicated many single nucleotide substitutions present throughout the gene. However, several relatively

conserved stretches were revealed by multiple alignments of these sequences (25). Therefore, several PCR primers were designed based on the sequences in the conserved regions. The codon bias of *S. macacae* was also considered in designing the primers, along with the frequency of the third base position in the codon table. PCR amplification was carried out using several primer sets as listed in Table 1. We successfully obtained two amplicons with overlapping sequences. The sequence of the longer amplicon was determined and revealed an approximately 70% homology to that of the corresponding region in *S. mutans* strain 109cS. The nucleotide sequence of the 2.6 kb fragment containing the entire *gbpC* homologous region was then determined.

Nucleotide and deduced amino acid sequences of *gbpC* homologue gene.

The 1854 bp open reading frame (ORF) begins with an ATG and terminates with a TAA codon. This ORF encodes a 617-amino acid protein with a calculated molecular mass of 67 kDa. The *gbpC* homologue gene exhibited a 67% identity with the *gbpC* in *S. mutans* strain 109cS (Fig. 3). The GbpC homologue protein has a 64% overall identity and 77% similarity with the *S. mutans* strain 109cS GbpC protein. Three putative candidates for a Pribnow box with relatively weak matches, e.g. TTGCAA-N17-TAATAT, were detected within 100 bp upstream of the ORF using a Promoter Prediction program by Neural Network (http://www.fruitfly.org/seq_tools/promoter.html) (17). A potential ribosome binding site (AAAAGGT) was found 9 bp upstream of the ATG initiation codon of the *gbpC* homologue gene and an inverted repeat was detected 30 bp downstream of the TAA termination codon with -65.94 kJ of free

energy per mol (35). This suggests that the *gbpC* gene homologue in *S. macacae* is monocistronic, similar to the *S. mutans gbpC* gene. The *gbpC* homologue gene product contained several features generally found in the surface proteins of Gram-positive bacteria. The GbpC homologue amino-terminus codes for a signal peptide-like sequence with relatively high proportions of basic amino acids. This putative signal peptide would consist of 27 amino acids (20). The sequence LPQTG, which matches the consensus sequence LPxTG for the Gram-positive cocci wall-anchored surface protein family, was detected at residue 581 of the protein, and the carboxal-terminal sequence, -KRRKKEN, was very similar to the membrane anchor region of various wall-anchored surface proteins found in Gram-positive cocci (19). A possible cell wall-associated region was also found between amino acid residues 519 and 557, which contained 12 regularly distributed proline residues.

Another feature of the overall amino acid composition of this putative mature GbpC homologue protein was its relatively high alanine (11.18%) and proline (5.8%) content, which was similar to that (12.1% and 4.9%, respectively) of the 58- to 60-kD glucan-binding lectin (GBL) isolated from *S. sobrinus* by Ma *et al*(15).

Glucan-binding assays

Matsumoto *et al.* (personal communication) has reported that the dextran binding activities of *S. mutans* fragments A and B (corresponding to the 328-1607 bp and 531-1096 bp regions of the *gbpC* gene, respectively) (Fig. 4) were as high as that for the intact GbpC protein. Therefore, we constructed *E.*

E. coli clones capable of overexpressing the full-length *S. macaccae* GbpC protein homologue without a signal peptide sequence (designated as pBAD-SmaGbpC). We also constructed partial GbpC protein domains corresponding to *S. mutans* fragments A and B (designated as pBAD-FraA and pBAD-FraB). We then used these constructs to examine the glucan-binding activities of the protein products. In addition, three other clones harboring pBAD/HisA expression vectors containing serially deleted partial *gbpC* homologues (pBAD-FraC, pBAD-FraD, and pBAD-FraE) were also constructed (Fig. 4). The expression of these induced his-tagged *S. macaccae* GbpC homologue proteins was confirmed by CBBR staining of SDS polyacrylamide gels and Western blot analysis with anti-Xpress antibody (data not shown).

Although no positive bands were detected with the vector control (designated as pBAD) of the Western blot, positive bands with molecular masses of approximately 75, 51, 25, 44, 41, and 38 kDa were detected in the extracts of pBAD-SmaGbpC, pBAD-FraA, pBAD-FraB, pBAD-FraC, pBAD-FraD, and pBAD-FraE, respectively. This corresponded to predicted approximate molecular sizes (Fig. 4). The corresponding bands were also detected by Western blot analysis with anti-serum generated against the *S. mutans* GbpC protein (data not shown), although multiple bands were also detected, indicating that the anti-GbpC serum cross-reacted with the *S. macaccae* GbpC homologue proteins.

Crude *E. coli* extracts were prepared as described in Materials and Methods. Glucan-binding activity was measured by immobilizing the induced proteins on nickel-coated wells in microtiter plates and measuring the binding

ability of biotinylated dextran to immobilized proteins following detection with Streptavidin-horseradish peroxidase conjugate. The constructs and their dextran-binding activities are shown in Fig. 5. The vector control did not exhibit any binding to dextran. pBAD-SmaGbpC displayed the highest dextran-binding activity. pBAD-FraA exhibited high dextran-binding activity, similar to that of pBAD-SmaGbpC. pBAD-FraC, which codes for a partial GbpC homologue, also exhibited dextran-binding activity, although the level was low compared to that of pBAD-SmaGbpC and pBAD-FraA. However, pBAD-FraB, which encodes the partial GbpC homologue that is homologous to *S. mutans* GbpC fragment B, showed no dextran-binding activity, and neither did pBAD-FraD or pBAD-FraE. This suggests that the glucan-binding domain may correspond to approximately 70 amino acid residues of the N-terminus in the *S. macaccae* GbpC homologue protein.

The observation that unlabelled dextran produced a reduction in signalling showed that biotin-dextran competed with unlabelled dextran (Fig. 6). The results further showed that amylose did not effectively compete with biotin-dextran for binding to immobilized pBAD-SmaGbpC, pBAD-FraA, or pBAD-FraC (Fig. 6). This suggests that α -1, 4 glucan does not inhibit the binding activity of the *S. macaccae* GbpC homologue. Dextran, the putative substrate for the GbpC homologue protein, competes for binding of biotin-dextran and amylose does not, at least at these concentrations. This suggests that dextran acts as a competitive inhibitor *i.e.* both ligands vie for the same site on the protein.

In addition, to determine whether the *S. macaccae* GbpC homologue

protein had an affinity toward α -1, 3 glucan, the glucan-binding activity of the diluted crude extracts of the *S. macacae* GbpC homologue protein was examined following treatment with excessive amounts of insoluble α -1, 3 glucan particles. The glucan-binding activity of the protein solution treated with α -1, 3 glucan showed no difference to that of the non-treated samples (data not shown).

Complementation of mutation in *S. mutans* by *in vitro* construction

The *S. macacae* *gbpC* homologue was introduced into ddag-negative *S. mutans* strain Z1. Complementation then showed that the *S. macacae* *gbpC* homologue had identical functions. *S. mutans* strain Z1 possesses a strain-specific *cnm* gene which participates in the cold agglutination phenotype (26) and is a ddag defective strain. These characteristics made *S. mutans* strain Z1 a suitable candidate for a host strain for transformation and subsequent screening. Twenty-six transformants were ultimately obtained and screened for cold agglutination- and ddag-phenotypes. Six out of the 26 colonies constitutively exhibited ddag-positive and cold agglutination-negative phenotypes. In addition, nucleotide sequencing confirmed that one mutant, designated as (QV)Z1, harbored a single nucleotide deletion in the *gbpC* gene. PCR amplification confirmed allelic exchange with the fragment constructed *in vitro* by the method described in the Materials and Methods (Fig. 7) (data not shown). This suggests that the *S. macacae* GbpC homologue protein is a glucan aggregation protein (Fig. 8).

Southern hybridization analysis of mutans streptococcal *gbpC* homologues.

We performed Southern hybridization analysis using the *S. macacae gbpC* homologue fragment probe with the chromosomal DNA of several mutans streptococci (*S. ferus*, *S. downei*, *S. sobrinus*, *S. rattii*, and *S. criceti*) to investigate the universality and distribution of *gbpC* homologues in mutans streptococci. Positive bands were detected in all these species, although none were exhibited in non-mutans streptococci, *S. sanguinis* strain ATCC10556, *S. gordonii* strain Challis, *S. anginosus* strain IS57, or *S. salivarius* strain ATCC9222 (Fig. 9). This suggests a broad distribution of *gbpC* homologues in mutans streptococci.

Discussion

The novelty of this study lies primarily in the detection and characterization of the glucan-binding protein C homologue in *S. macacae*. *S. sobrinus* more readily autoaggregated than did *S. mutans*, and one study has demonstrated glucan-binding lectin (GBL) to be a major GBP of *S. sobrinus* (8). Subsequently, it was reported that *S. sobrinus* possessed the GBP capability of binding dextran, and that one of these proteins, the 60 kDa protein, appeared to be involved in ddag (15). GBLs have been defined as GBPs that confer the property of aggregation on bacteria in the presence of exogenous dextran (15).

Similarly, here we propose the designation Dbls (Dextran-binding lectins) as referring to a wall-anchored protein family characterized by dextran-binding activity (e.g. GbpC). This cell-wall anchoring of the protein is essential for the aggregation phenotype, as discussed below. We propose that it is reasonable to designate these proteins as Dbls, but not Gbls, since they do not exhibit any binding activity with amylose (α -1, 4-glucan) or α -1, 3-glucan, as indicated in Fig. 6.

Unrooted phylogenetic trees showing the relationship of partial 16S rRNA sequences revealed a close relationship between *S. macacae* and *S. mutans* (37). Furthermore, *S. macacae* is more similar to *S. mutans* than to other mutans streptococci in respect to the serotype polysaccharide antigen, genomic GC content (5), and spontaneous generation of colonization defective mutants (unpublished results) reported in *S. mutans* (36). This study was originally undertaken with the intent of investigating the divergent evolution of these two species. In addition, we were interested in whether *gbpC* was a widespread adherence factor in mutans streptococci. In addition to GBPs, *S. mutans* also possesses glucan-binding glucosyltransferases (GTFs), water-insoluble glucan-synthesizing GTF-I encoded by *gtfB* (1) and *gtfC* (10) and water-soluble glucan-synthesizing GTF-S encoded by *gtfD* (11). Glucans can also interact with Gbps to promote cell-to-cell aggregation (9, 33). The *gtf* genes and the *pac* gene (21, 22) encoding the extracellular surface protein antigen of serotype c *Streptococcus mutans* are regarded as major etiological factors for dental caries (4, 14, 21, 22), and their homologues are reported to be widely distributed among mutans streptococci. The *gbpC* gene homologue, however, has yet to be

found in species other than *S. mutans*. We expected the *S. macacae gbpC* homologue gene to exhibit a higher homology with the *S. mutans gbpC* gene because of the stringency of the Southern hybridization analysis performed (data not shown). The homology between these genes was 67% at the nucleotide level, and was not as high as expected from the results of the Southern hybridization analysis, although the putative monocistronic organization of these two genes was the same. No ORFs were found in either strand within 730 bp upstream of the *S. macacae gbpC* ORF. In the downstream flanking sequences, the formation of a putative stem-loop structure in this region of the mRNA corresponds to a free-energy change of -64.5 kJ per mol. In addition, anti-GbpC serum cross-reacted with the recombinant GbpC homologue protein with a 77% similarity to the GbpC protein. This was not surprising, as anti-GbpC serum contains polyclonal antibodies. Therefore, these two proteins should share common epitopes.

The functional domain for glucan-binding in the *S. mutans* GbpC protein has been estimated to be located within the fragment B region (Matsumoto, personal communication). However, our results for the dextran binding of the GbpC homologue do not concur with their reports (Fig. 5). The dextran-binding activity expressed from pBAD-FraA was as high as that from pBAD-SmaGbpC, while the proteins expressed from pBAD-FraB, pBAD-FraD, and pBAD-FraE did not exhibit any dextran-binding activity (Fig. 5). This difference in functional domains for dextran-binding may result from a divergence of the two homologous proteins. pBAD-FraC, which codes for a partial GbpC homologue, exhibited low dextran-binding activity compared with pBAD-SmaGbpC and

pBAD-FraA. This suggests that the critical domain for glucan binding may be located near the N-terminus of the *S. macacae* GbpC homologue protein.

A *gbpC* homologue gene was detected in the *S. macacae* chromosome by PCR using primers designed from the *gbpC* nucleotide sequences of the *S. mutans* strains. We observed nucleotide polymorphisms in the *S. mutans gbpC* gene in various strains (25), and utilized these polymorphisms in designing the primers for the PCR analysis of the *S. macacae*. We also investigated whether the *S. macacae gbpC* homologue gene was a divergent molecular species. Initially, we attempted to detect *gbpC* homologues from *S. macacae* by colony and plaque hybridization. However, we found no positive clones or plaques, even after screening a number of clones corresponding to more than a 100-fold coverage of the entire genome.

Since *S. macacae*, like *S. sobrinus* (6), is neither naturally nor artificially transformable (unpublished result), constructing a knock-out mutant in this species is difficult. Therefore, in this study, we attempted to demonstrate complementation using chimeric fragments constructed *in vitro* by PCR, and the results were successful (Fig. 8). Accordingly, we believe that the *S. macacae gbpC* homologue gene is responsible for the ddag phenotype of this organism. It is highly likely that the *gbpC* homologue gene is an important factor in the ddag of *S. macacae*, since the GbpC homologue protein appears to be a wall-anchored protein and exhibits dextran-binding activity (Fig. 5). The GbpC homologue protein is a member of the wall-anchored protein family and possesses a potential anchor domain consisting of four characteristic features: a hydrophilic wall-spanning region rich in glycine and proline; an LPxTG motif,

which is the consensus sequence for Gram-positive cocci surface proteins; a hydrophobic membrane-spanning region; and a cytoplasmic charged tail in its C-terminal region (19). Igarashi *et al.* (12) demonstrated that an *S. mutans* sortase enzyme encoded by the *srt* gene mediated the cell wall-anchoring of the GbpC protein, and that a *srt*-mutant of this organism lost the ddag phenotype. Therefore, a cell wall-anchored GbpC homologue protein with glucan-binding capability is the most likely candidate for the ddag phenotype of *S. macacae*.

S. macacae exhibits the ddag phenotype constitutively, as does *S. sobrinus* and *S. criceti*, while *S. mutans* exhibits inducible ddag only after growth under stress-conditions, *i.e.*, cells grown at 42°C or growth with sub-inhibitory concentrations (0.18µg/ml) of tet. However, the extent of aggregation in *S. macacae* is more similar to that in *S. mutans* than in *S. sobrinus* (Fig. 2). In this respect, *S. macacae* exhibits an intermediate aggregation phenotype among these mutans streptococci. Moreover, only *S. macacae* and *S. mutans* exhibited positive bands when probed with the *S. mutans gbpC* gene fragment, while all of the serotype *a-h* mutans streptococci exhibited positive bands when probed with the *S. macacae gbpC* homologue fragment under Southern hybridization analysis (Fig. 9). These results suggest that the *S. macacae gbpC* homologue gene is closer to ancestral sequences than the other *gbpC* homologues in mutans streptococci. This may be compatible with the intermediate aggregation phenotype of *S. macacae*. In early investigations, GBPs involved in ddag were regarded to be specific for *S. sobrinus* and *S. criceti* (8). However, we found that the *gbpC* gene was involved in the *S. mutans* ddag. Moreover, we also detected the *gbpC* homologue in *S. macacae*. Positive Southern hybridization bands were

detected even in *S. ferus* (Fig. 9), which was reported to exhibit only 1.0% hybridization with *S. macacae* in DNA base-pairing experiments (37). Recently, it has been questioned whether *S. ferus* should truly be regarded as a mutans streptococcus (2, 24, 37). Although the classification of *S. ferus* still needs further consideration, we detected positive Southern hybridization bands in this species. The widespread occurrence of *gbcC* gene homologues in mutans streptococci observed in this study suggests that they may play an important role in the survival of mutans streptococci in plaque biofilms. It is probable that *gbcC* homologues may also be later identified in other species of mutans streptococci such as *S. sobrinus* and *S. criceti*. A homology search against the TIGR Microbial database for the unfinished *S. sobrinus* sequence showed five gene regions with relatively high homology scores for the *S. mutans* GbpC protein sequence. Therefore, a positive identification of the actual *gbcC* gene homologue cannot be made at present. We have not yet obtained positive results for *S. sobrinus* with the primer sets used in this work. We are currently examining the conditions and designing the primers necessary to detect *gbcC* homologues from other mutans streptococci by PCR analysis for subsequent isolation and characterization.

Acknowledgement

We wish to thank T. Igarashi (Showa University School of Dentistry, Tokyo, Japan), K. Fukushima (Nihon University School of Dentistry at Matsudo, Chiba,

Japan), N. Hanada (Department of Oral Health, National Institute of Public Health, Tokyo, Japan) and T. Kodama (Department of Bioscience and Bioinformatics, Kyushu Institute of Technology, Iizuka, Japan), for providing strains of *S. macacae*, *S. rattii*, *S. ferus*, *S. creceti*, *S. downei*, and the gift of α -1, 3 glucan, respectively. We wish to thank H.K. Kuramitsu (State University of New York at Buffalo, NY) for a critical reading of the manuscript.

This investigation was supported in part by Oral Health Science Center Grant 05A12 from Tokyo Dental College.

References

1. Aoki H, Shiroza T, Hayakawa M, Sato S, Kuramitsu HK, Cloning of a *Streptococcus mutans* glucosyltransferase gene coding for insoluble glucan synthesis. Infect Immun 1986; 53: 587-594.
2. Baele M, Devriese LA, Vancanneyt M, Vaneechoutte M, Snauwaert C, Swings J, Haesebrouck F, Emended description of *Streptococcus ferus* isolated from pigs and rats. Int J Syst Evol Microbiol 2003; 53: 143-146.
3. Banas JA, Russell RR, Ferretti JJ, Sequence analysis of the gene for the glucan-binding protein of *Streptococcus mutans* Ingbritt. Infect Immun 1990; 58: 667-673.
4. Banas JA, Vickerman MM, Glucan-binding proteins of the oral streptococci. Crit Rev Oral Biol Med 2003; 14: 89-99.
5. Beighton D, *Streptococcus macacae* sp. nov. from Dental Plaque of Monkeys. International Journal of Systematic Bacteriology 1984; 34: 332-335.
6. Colby SM, McLaughlin RE, Ferretti JJ, Russell RR, Effect of inactivation of *gtf* genes on adherence of *Streptococcus downei*. Oral Microbiol Immunol 1999; 14: 27-32.
7. Curtiss R, 3rd, Genetic analysis of *Streptococcus mutans* virulence. Curr Top Microbiol Immunol 1985; 118: 253-277.
8. Drake D, Taylor KG, Bleiweis AS, Doyle RJ, Specificity of the glucan-binding lectin of *Streptococcus cricetus*. Infect Immun 1988; 56: 1864-1872.
9. Haas W, Banas JA, Ligand-binding properties of the carboxyl-terminal repeat domain of *Streptococcus mutans* glucan-binding protein A. J Bacteriol 2000; 182: 728-733.
10. Hanada N, Kuramitsu HK, Isolation and characterization of the *Streptococcus mutans gtfC* gene, coding for synthesis of both soluble and insoluble glucans. Infect Immun 1988; 56: 1999-2005.
11. Hanada N, Kuramitsu HK, Isolation and characterization of the *Streptococcus mutans gtfD* gene, coding for primer-dependent soluble glucan synthesis. Infect Immun 1989; 57: 2079-2085.
12. Igarashi T, Asaga E, Sato Y, Goto N, Inactivation of *srtA* gene of *Streptococcus mutans* inhibits dextran-dependent aggregation by glucan-binding protein C. Oral Microbiol Immunol 2004; 19: 57-60.

13. Lis M, Shiroza T, Kuramitsu HK, Role of C-terminal direct repeating units of the *Streptococcus mutans* glucosyltransferase-S in glucan binding. *Appl Environ Microbiol* 1995; 61: 2040-2042.
14. Loesche WJ, Role of *Streptococcus mutans* in human dental caries. *Microbiol Rev* 1986; 50: 353-380.
15. Ma YS, Lassiter MO, Banas JA, Galperin MY, Taylor KG, Doyle RJ, Multiple glucan-binding proteins of *Streptococcus sobrinus*. *J Bacteriol* 1996; 178: 1572-1577.
16. Matsumura M, Izumi T, Matsumoto M, Tsuji M, Fujiwara T, Ooshima T, The role of glucan-binding proteins in the cariogenicity of *Streptococcus mutans*. *Microbiol Immunol* 2003; 47: 213-215.
17. Mattos-Graner RO, Jin S, King WF, Chen T, Smith DJ, Duncan MJ, Cloning of the *Streptococcus mutans* Gene Encoding Glucan Binding Protein B and Analysis of Genetic Diversity and Protein Production in Clinical Isolates. *Infect Immun* 2001; 69: 6931-6941.
18. Nakano K, Matsumura M, Kawaguchi M, Fujiwara T, Sobue S, Nakagawa I, Hamada S, Ooshima T, Attenuation of glucan-binding protein C reduces the cariogenicity of *Streptococcus mutans*: analysis of strains isolated from human blood. *J Dent Res* 2002; 81: 376-379.
19. Navarre WW, Schneewind O, Surface proteins of gram-positive bacteria and mechanisms of their targeting to the cell wall envelope. *Microbiol Mol Biol Rev* 1999; 63: 174-229.
20. Nielsen H, Engelbrecht J, Brunak S, von Heijne G, Identification of prokaryotic and eukaryotic signal peptides and prediction of their cleavage sites. *Protein Eng* 1997; 10: 1-6.
21. Okahashi N, Sasakawa C, Yoshikawa M, Hamada S, Koga T, Cloning of a surface protein antigen gene from serotype c *Streptococcus mutans*. *Mol Microbiol* 1989; 3: 221-228.
22. Okahashi N, Sasakawa C, Yoshikawa M, Hamada S, Koga T, Molecular characterization of a surface protein antigen gene from serotype c *Streptococcus mutans*, implicated in dental caries. *Mol Microbiol* 1989; 3: 673-678.
23. Sambrook J, Fritsch EF, Maniatis T. *Molecular Cloning: a laboratory manual*, 2nd. Cold Spring Harbor, NY: Cold Spring Harbor Laboratory Press, 1989.

24. Sato T, Hu JP, Ohki K, Yamaura M, Washio J, Matsuyama J, Takahashi N, Identification of mutans streptococci by restriction fragment length polymorphism analysis of polymerase chain reaction-amplified 16S ribosomal RNA genes. *Oral Microbiol Immunol* 2003; 18: 323-326.
25. Sato Y, Okamoto-Shibayama K, Kagami A, Yamamoto Y, Kizaki H, Single nucleotide polymorphisms detected in the *gbc* gene coding region of *Streptococcus mutans*. *Journal of Oral Biosciences*, 2005; 47: 171-174.
26. Sato Y, Okamoto K, Kagami A, Yamamoto Y, Igarashi T, Kizaki H, *Streptococcus mutans* strains harboring collagen-binding adhesin. *J Dent Res* 2004; 83: 534-539.
27. Sato Y, Okamoto K, Kizaki H, *gbc* and *pac* gene mutations detected in *Streptococcus mutans* strain GS-5. *Oral Microbiol Immunol* 2002; 17: 263-266.
28. Sato Y, Senpuku H, Okamoto K, Hanada N, Kizaki H, *Streptococcus mutans* binding to solid phase dextran mediated by the glucan-binding protein C. *Oral Microbiol Immunol* 2002; 17: 252-256.
29. Sato Y, Yamamoto Y, Kizaki H, Cloning and sequence analysis of the *gbc* gene encoding a novel glucan-binding protein of *Streptococcus mutans*. *Infect Immun* 1997; 65: 668-675.
30. Sato Y, Yamamoto Y, Kizaki H, Kuramitsu HK, Cloning of the phospho-beta-galactosidase gene in *Escherichia coli* from lactose-negative mutants of *Streptococcus mutans* isolated following random mutagenesis with plasmid pVA891 clone banks. *FEMS Microbiol Lett* 1992; 70: 219-224.
31. Sato Y, Yamamoto Y, Suzuki R, Kizaki H, Kuramitsu HK, Construction of *scrA::lacZ* gene fusions to investigate regulation of the sucrose PTS of *Streptococcus mutans*. *FEMS Microbiol Lett* 1991; 63: 339-345.
32. Shah DS, Russell RR, A novel glucan-binding protein with lipase activity from the oral pathogen *Streptococcus mutans*. *Microbiology* 2004; 150: 1947-1956.
33. Shah DSH, Russell RR, Glucan binding domain of streptococcal glycosyltransferases. *Biologia* 2002; 57: 129-136.
34. Smith DJ, King WF, Wu CD, Shen BI, Taubman MA, Structural and antigenic characteristics of *Streptococcus sobrinus* glucan binding proteins. *Infect Immun* 1998; 66: 5565-5569.
35. Tinoco I, Jr., Borer PN, Dengler B, Levin MD, Uhlenbeck OC, Crothers

DM, Bralla J, Improved estimation of secondary structure in ribonucleic acids. *Nat New Biol* 1973: 246: 40-41.

36. Ueda S, Kuramitsu HK, Molecular basis for the spontaneous generation of colonization- defective mutants of *Streptococcus mutans*. *Mol Microbiol* 1988: 2: 135-140.
37. Whatmore AM, Whiley RA, Re-evaluation of the taxonomic position of *Streptococcus ferus*. *Int J Syst Evol Microbiol* 2002: 52: 1783-1787.
38. Wu Q, Wang Q, Taylor KG, Doyle RJ, Subinhibitory concentrations of antibiotics affect cell surface properties of *Streptococcus sobrinus*. *J Bacteriol* 1995: 177: 1399-1401.

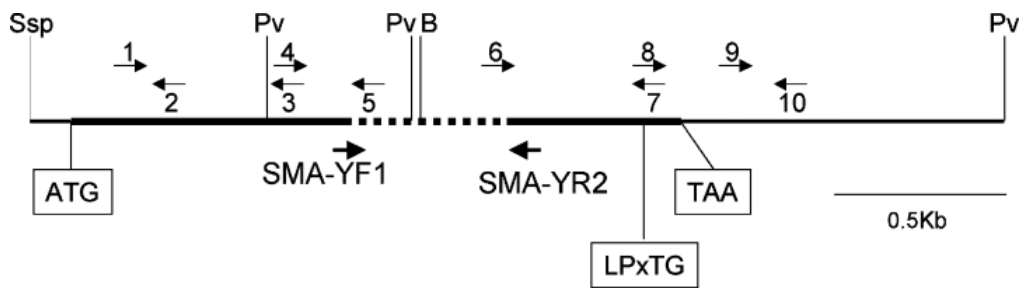


Fig. 1 Restriction map around *gbpC* homologue and locations of primers designed for identification of ORF.

Thick-lined arrow indicates direction and region of *gbpC* gene homologue.

Dotted line indicates region which was obtained by initial PCR amplification and subsequent sequencing with primers SMA-YF1 and SMA-YR2. Arrows with

numbers indicate approximate PCR primer locations and their directions (5' to 3').

Other symbols are: B, *Bam*HI; Pv, *Pvu*II; Ssp, *Ssp*I indicating respective restriction enzyme recognition sites.

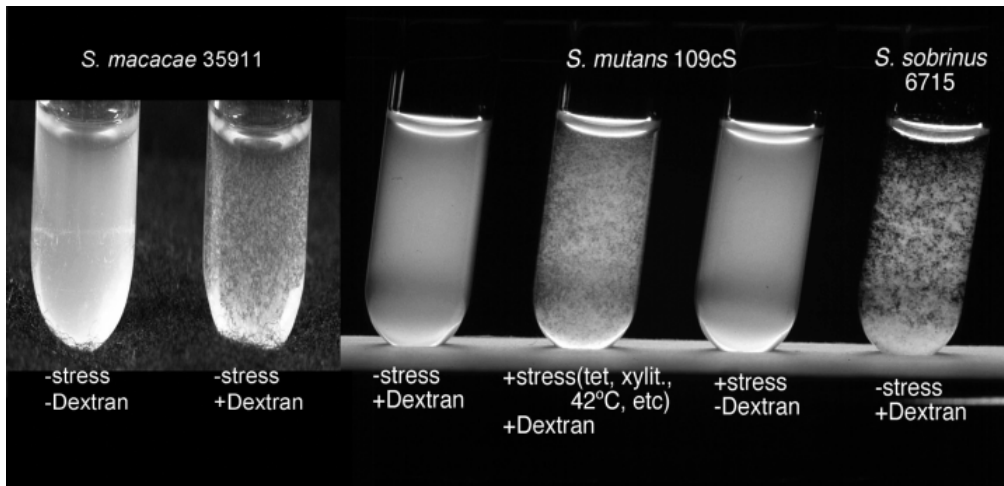


Fig. 2 Dextran-dependent aggregation of *S. macacae*.

Dextran-dependent aggregation of *S. macacae* ATCC 35911, *S. sobrinus* 6715, and *S. mutans* 109cS grown in BTR-G broth with (+) or without (-) stress induced by 0.18 µg/ml tet or 0.6% Xylitol or grown at 42 °C. Appearance of dextran-dependent aggregated cells of *S. sobrinus* 6715 and *S. mutans* 109cS also shown for reference.

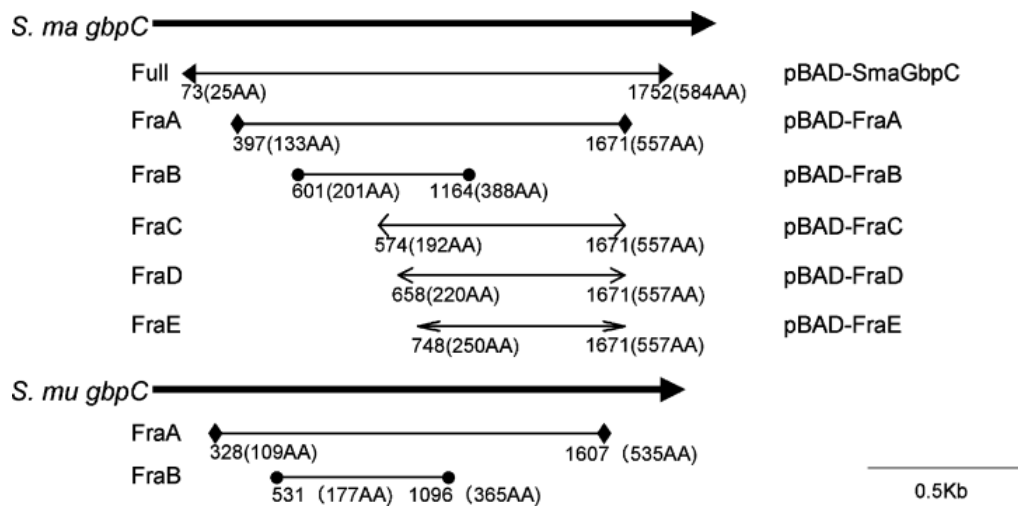


Fig. 4 Subcloning and expression *S. macacae gbpC* homologue fragments.

◆—◆ and ●—● indicate fragment A and B regions of *S. mutans* GbpC, respectively, and homologous regions in *S. macacae* GbpC homologue (pBAD-FraA and pBAD-FraB). Other double-headed arrows indicate full length or partial length of *S. macacae* GbpC homologue (pBAD-SmaGbpC, pBAD-FraC, pBAD-FraD, and pBAD-FraE). Numbers and those suffixed with AA in parentheses indicate nucleotide and amino acid numbers at both ends of fragments, respectively.

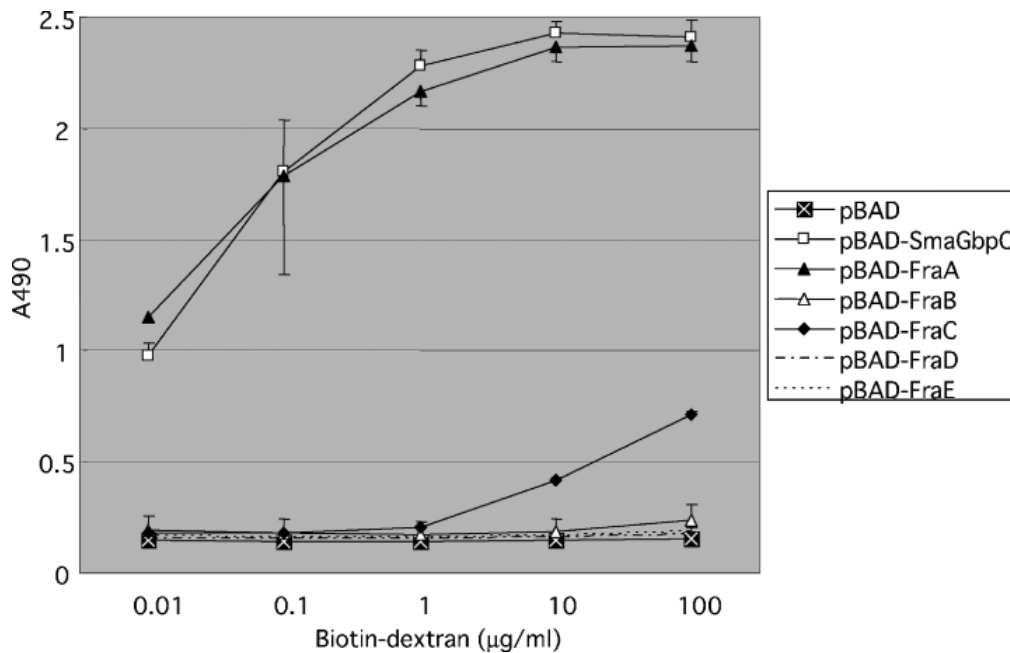


Fig. 5 Biotin-dextran binding by histidine-tagged derivatives of *S. macacae* GbpC homologue proteins.

Crude extract from *E. coli* TOP10 harboring pBAD/HisA (designated pBAD) used as vector control. pBAD-SmaGbpC, pBAD-FraA, B, C, D, and E are crude extracts from *E. coli* TOP10 harboring pBAD/HisA containing fragments corresponding to those in Fig. 4. Higher A490 values equate to higher binding activities.

Wells of ELISA plates were coated with equivalent amounts of protein for each extract, incubated with indicated concentrations of biotin-dextran and detected as described under Materials and Methods. Data presented are averages and standard errors of three independent determinations for each sample.

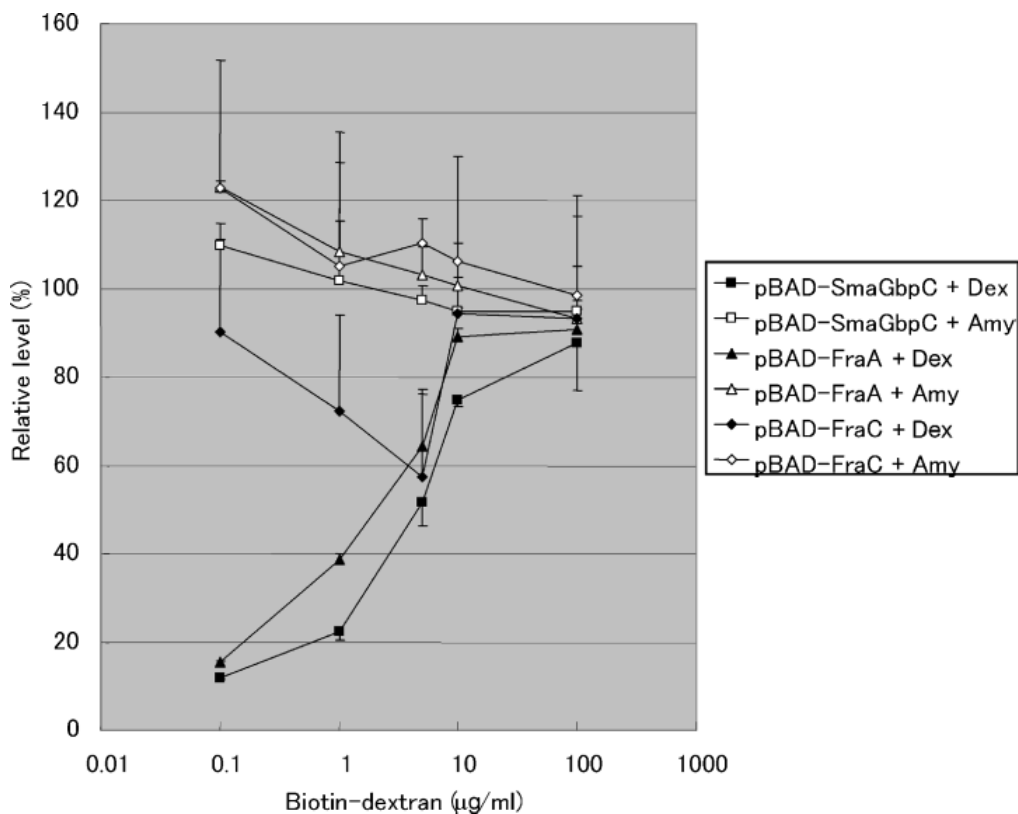


Fig. 6 Competition with dextran and amylose (α -1, 4 glucan) for binding to pBAD-SmaGbpC, pBAD-FraA, and pBAD-FraC.

Concentration of biotin-dextran was increased, whilst concentration of competitor was kept constant. Competitors diluted in PBS +0.2% BSA were Dextran (unlabelled dextran at 10 μ g/ml) and amylose (10 μ g/ml).

Data are expressed as percentage of each biotin-dextran binding activity without competitor (set at 100%). Values represent averages and standard errors of three independent determinations for each sample.

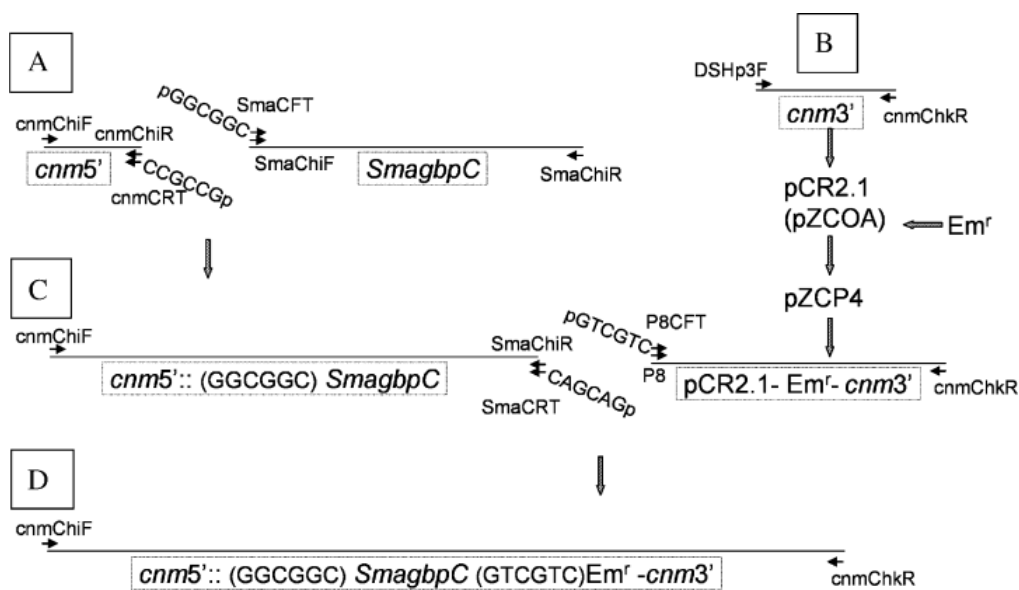


Fig. 7 Construction of fragment used in complementation test

Procedure of fragment construction described under Materials and Methods.

Line A: strategy to construct chimeric molecule between *S. mutans* *cnm* 5' gene region and fragment from *S. macacae* *gbpC* gene homologue. Predicted protein expected to be correctly secreted and cell wall-sorted into *S. mutans* cells. Line B: plasmid construction to align erythromycin-resistant gene upstream of partial *cnm* 3' gene region. Line C: strategy to construct linear fragment to be introduced into *S. mutans* by allelic exchange mechanism. Line D: constructed linear fragment used to transform *S. mutans*. Following transformation of *S. mutans* with fragment, 26 colonies were detected on Mitis-Salivarius agar plates after 3 days anaerobic incubation, and transformants were screened for ddag and cold agglutination phenotype.

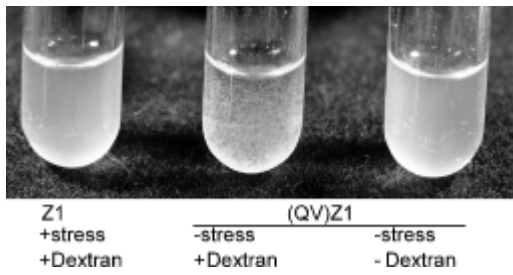


Fig. 8 Dextran-dependent aggregation of *S. mutans* Z1 transformed with chimeric molecule of *S. macacae* gbpC gene homologue.

(QV)Z1 is ddag-positive and cold agglutination-negative transformant of *S. mutans* strain Z1.

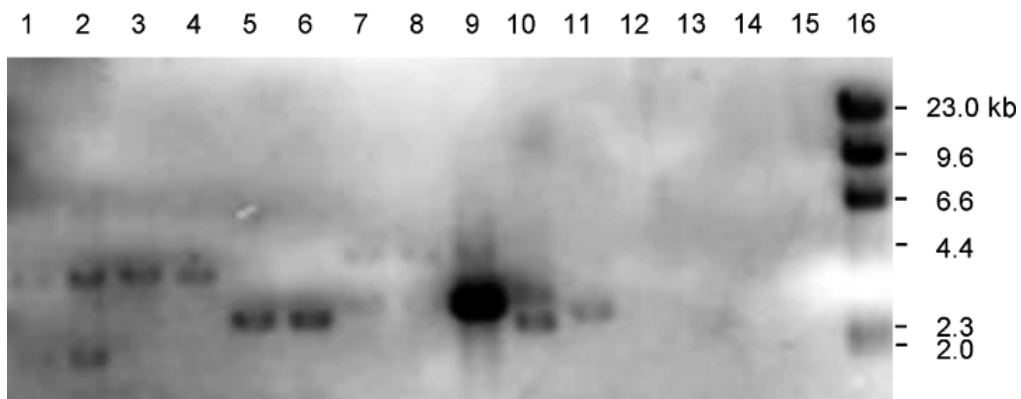


Fig. 9 Distribution of *gbpC* gene homologue in mutans streptococcal chromosomes.

Chromosomal DNA digested with *Hind*III from several species of mutans streptococci were analyzed using *S. macacae gbpC* homologue fragment.

lane 1: *S. criceti* HS6,

lane 2: *S. criceti* OMZ61,

lane 3: *S. ratti* 107P,

lane 4: *S. ratti* FA-1,

lane 5: *S. mutans* 109c,

lane 6: *S. mutans* UA159,

lane 7: *S. sobrinus* ATCC6715,

lane 8: *S. sobrinus* 100-4,

lane 9: *S. macacae* ATCC35911,

lane 10: *S. downei* Mfe28,

lane 11: *S. ferus* ATCC33477,

lane 12: *S. sanguinis* 10556,

lane 13: *S. gordonii* Challis,

lane 14: *S. anginosus* IS57,

lane 15: *S. salivarius* 9222,

lane 16: Size marker.

Table 1. Primers used in identification and sequencing of *Streptococcus macacae gbpC* gene homologue and in complementation test. SMA-YF1, SMA-YF2, SMA-YR1, SMA-YR2, and SMA-YR3 were used to detect *S. macacae gbpC* homologues. AP1, SMA-KF4, SMA-KR5, SMA-KR3, SMA-KF5, SMA-KR1, SMA-KF1, SMA-KR7, SMA-KF2, SMA-KF9 and SMA-KR9 were used in genome-walking. Numbers following names correspond to position in Fig. 1. Primer AP1 was supplied with Universal Genome Walker Kit (Clontech). Primers *cnmChiF*, *cnmChiR*, *cnmCRT*, *SmaChiF*, *SmaChiR*, *SmaCFT*, *SmaCRT*, *DSHpa3F*, *cnmchkR*, P8 and P8CFT were used in complementation test. Primer P8 was supplied by TOYOBO. Numbers following sequences correspond to position in *S. mutans* strain Z1 *cnm* gene sequence under accession number AB102689. Location of *cnmchkR* primer is 223 bp downstream of AB102689 sequence.

Name	Sequence (5' - 3')	Primer orientation
AP1	GTAATACGACTCACTATAGGGC	
SMA-YF1	GAAGATACTTGGTTYAARATGAA	Forward
SMA-YF2	ATGAGTCTCTCATCGTTAAAYCAYTGGAC	Forward
SMA-YR1	TCATTGCCATTTTCATCRTARAA	Reverse
SMA-YR2	GTCATAGCACCTGCACCRRTARTA	Reverse
SMA-YR3	TCAACAACAAGATTYTRTGCCA	Reverse
SMA-KF4 (1)	GCTAATACTGACAAGAGTGGAC	Forward
SMA-KR5 (2)	AGGAGAATCTGTCTCTTGCTTA	Reverse
SMA-KR3 (3)	TGAGCTGTTTCCACTCGGC	Reverse
SMA-KF5 (4)	AGCTCAGTCACTGGTTTTT	Forward
SMA-KR1 (5)	GTTCAACAAGAGTCGTACCATCATTGC	Reverse

Name	Sequence (5' - 3')	Primer orientation
SMA-KF1 (6)	GCCAATGGTGCAGCTTTTAAT	Forward
SMA-KR7 (7)	GCTCTCTCACTCGCACCTCA	Reverse
SMA-KF2 (8)	CGAGTGAGAGAGCGCCA	Forward
SMA-KF9 (9)	GATGTAAAAGAAGTTTCGAGA	Forward
SMA-KR9 (10)	CCTGACGTTTTTTAAGTTCTTC	Reverse
cnmChiF	ATGAAAAGAAAAGGTTTACGAAGACTATTA (68-97)	Forward
cnmChiR	ATCATTAACTCTGAGTCGGTGATACC (220-196)	Reverse
cnmCRT	pGCCGCCATCATTAACTCTGAGTCGGTGATACC	Reverse
SmaChiF	GCTGCTGCTCAGCAAATG	Forward
SmaChiR	TTAGTTCTCTTTTTTACGTCTTTTAGCT	Reverse
SmaCFT	pGGCGGCGCTGCTGCTCAGCAAATG	Forward
SmaCRT	pGACGACTTAGTTCTCTTTTTTACGTCTTTTAGCT	Reverse
DSHpa3F	AAACAATACTAAAGTTAAGGAACCAGA (1473-1500)	Forward
cnmchkR	AATCATTTTTTCTTCATTATAAAAAGC	Reverse
P8 (TOYOBO)	AGCGGATAACAATTTACACAGGAAAC	Forward
P8CFT	pGTCGTCAGCGGATAACAATTTACACAGGAAAC	Forward

Name	Sequence (5' - 3')	Primer orientation
Abbreviations: R (A/G), Y (C/T), N (A/T/G/C), Glu: GAR, Asp: GAY/RTA, His/Gln: CAN, Phe: TTY/RAA, Lys: AAR/YTT, Asn: AAY, His: CAY/RTG, Tyr: TAY/RTA.		